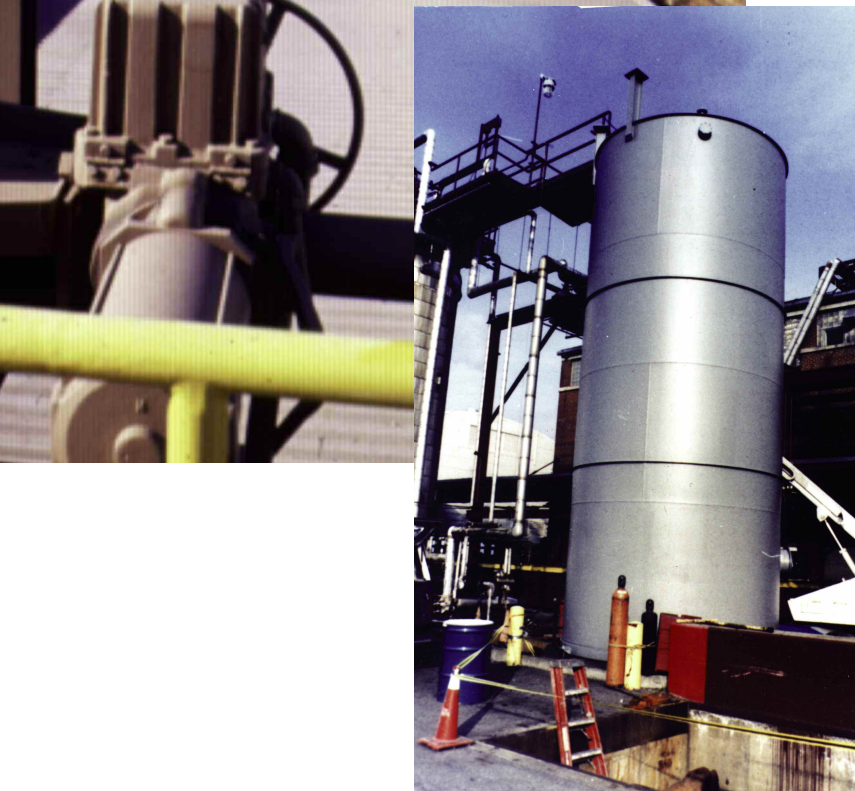


# Pitt-Tech Plus

## Low VOC DTM Industrial Enamels

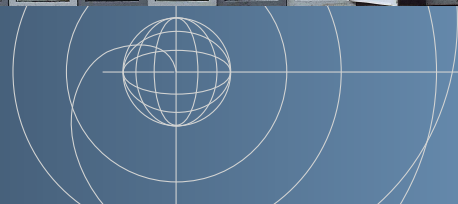
90-1310 (gloss), 90-1210 (semi-gloss), 90-1110 (satin)

**Pitt-Tech Plus Enamels** are 100% acrylic waterborne coatings developed for direct-to-metal application. Pitt-Tech Plus provides excellent corrosion protection, chemical and impact resistance in light to moderate industrial applications with a low VOC. Its waterborne technology and South Coast-passing VOC level make it ideal for environmentally sensitive projects



### B E N E F I T S

- Direct-to-metal application
- Excellent color and gloss retention
- VOC levels below 100 g/L for ALL sheens
- Fast drying – same day recoat
- Additional benefits on reverse



# Pitt-Tech Plus

## Low VOC DTM Industrial Enamels

90-1310 (gloss), 90-1210 (semi-gloss), 90-1110 (satin)

### TECHNICAL INFORMATION

	90-1310 Gloss	90-1210 S/G	90-1110 Satin
Sheen: (60° gloss)	>70	45 - 55	15 - 25
VOC	88.6 g/L (.74 lbs./gal)	87.9 g/L (.73 lbs./gal)	84.4 g/L (.70 lbs./gal)
Volume Solids	40.8	40.6	42.4
Weight Solids	51	51.3	54.8
Theoretical Coverage	218 - 327 sq. ft./gal.	217 - 326 sq. ft./gal.	227 - 340 sq. ft./gal.
Recommended WFT	5 - 7.5 mils		
Recommended DFT	2 - 3 mils		
Thinning	If desired, may thin up to 5% with water (recommended for spray application)		
Dry Time @ 77°F, 50% RH (ASTM D5895)	Dry to Touch	Dry to Handle	Dry to Recoat
	15 minutes	30 minutes	1 hour

### BENEFITS

- Excellent corrosion resistance
- Flash rust resistant
- Withstands repeated cleanings
- Ready-mixed safety colors available
- Unlimited color range with Pittsburgh Paints' Voice of Color tinting system
- Pitt-Tech Primer/Finish available in three colors: red, gray, and white

### COMPARE PITT-TECH PLUS TO A LEADING COMPETITOR

	New product EP200602/EP200610	Competitor 1
Initial 20/60 gloss	64/84	51/78
20/60 Gloss retention (ASTM D 4587) QUV (UVA-340)	500 hrs. 51/81 1400 hrs. 38/75	500 hrs. 3/21 1588 hrs. 2/11
Dry times @ 77F, 50% RH		
Dry to Touch	15 minutes	30 minutes
Dry to Handle	30 minutes	5 hours
Dry to Recoat	1 hour	5 hours
Low temp. cure/dry	40 degrees F	50 degrees F
VOC	89 g/l	190 g/l
Vol. Solids Coverage (sq.ft./gal.)	40.8 +/- 2% 218 - 327	38.5 +/- 2% 154 - 247
Corrosion Resistance (ASTM B117)	=	=
Flash rust resistance	Pass	Pass
Chemical resistance	=	-
Abrasion resistance (ASTM D 4060)	=	=
Adhesion to CRS (ASTM D 3359)	5A	0A
Pencil Hardness (ASTM D 3363)	B	<6B
Dir/Rev Impact Resist. (ASTM D 2794)	160/160	160/140
Conical Mandrell Bend (ASTM D 522) Method A	Pass, no cracks	Pass, no cracks
Application		
spray	Yes	Yes
brush	Yes	Yes
roll	Yes	Yes
Odor	very low	low
Color capability	wide range	-
MPI # 164 Listed	Yes	Yes
Applicable substrates		
	Aluminum	Aluminum
	Concrete	Concrete
	Galvanized metal	Galvanized metal
	Drywall	-
	Masonry	Masonry
	Ferrous metal	Ferrous metal
	Zinc rich primers	Zinc rich primers

### PPG Protective & Marine Coatings

One PPG Place • Pittsburgh, PA 15272 • 1-800-441-9695 • Fax: 888-807-5123 • www.ppgpmc.com

### PPG Canada Inc.

4 Kenview Boulevard • Brampton, ON L6T 5E4 • Phone: 905-790-5349 • Fax: 877-238-6441

